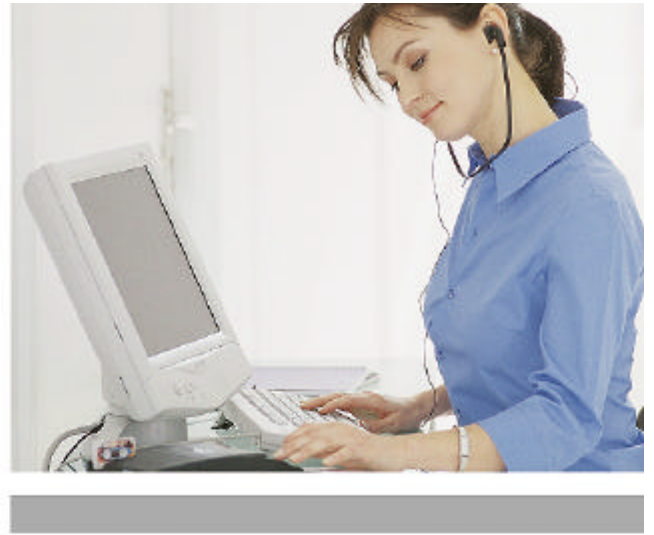


# Sophistication meets simplicity



## SpeechExec Transcription Set 7177 PC-based transcription software

Advanced technology doesn't have to be complicated. The SpeechExec Transcription Set 7177 is a digital transcription system specifically designed to make transcription easy and intuitive. The ergonomic accessories and innovative transcription software let you easily and efficiently manage jobs by displaying all relevant information such as jobs marked as priority and each job's transcription status. SpeechExec Transcription Set 7177 is the sophisticated solution that simply lets you get on with your job.



800/643-8353

# PHILIPS

# SpeechExec Transcription Set 7177



## Manage your workload

- Visual job overview allows more efficient organization and planning of workloads
- Visual workflow management facilitates priority documents to be transcribed in order of your preference
- Access to job information during transcription provides all relevant dictation data, such as length, author name, key words and priority status
- Job status indicator shows if a dictation is pending, in progress or completed
- Automatic transfer of dictation files via network

## Software features

### Player

- Audio volume meter
- Graphical position indicator
- Fast forward, rewind, skip
- Audible scan
- Real time counter
- DSS / WAV / WMA / MP3 playback
- Speed control
- Automatic backspace

### Administration

- Automatic update via internet

### Worklist / Workflow

- Familiar folder view (looks like Windows® Explorer)
- Configurable work list: sort, hide and show columns etc.
- Job status indication: shows if a dictation is pending, in progress, finished
- Link to speech recognition – interface built in

## Package content

- SpeechExec Transcribe Software
- Foot Control 210
- Earphones 234
- USB Software Dongle
- Installation Guide
- USB Adapter (no Sound Card required)

## Accessories

- Earphones 232, 233, 234, 236

## PC requirements

- Minimum: Pentium II, 233 MHz and 64 MB RAM.
- Recommended: Pentium III, 500 MHz and 128 MB RAM.
- Min. hard disk capacity: 150 MB
- Control connection: self-powered USB port (for USB devices)

## Software requirements

- Microsoft Windows 2000 (SP3 for Digital Pocket Memo support).
- Microsoft Windows XP

For all listed operating systems, we recommend to apply the latest Service Pack available before installing SpeechExec.

## Network requirements

Recommended minimum transfer rate for LAN: 100Mbit/s

## Related Products

- LFH 5220: Foot Control 210 + Earphones 234 + USB Adapter
- SpeechExec Pro Transcribe 7257: Software + Dongle
- SpeechExec Pro Transcription Set 7277

